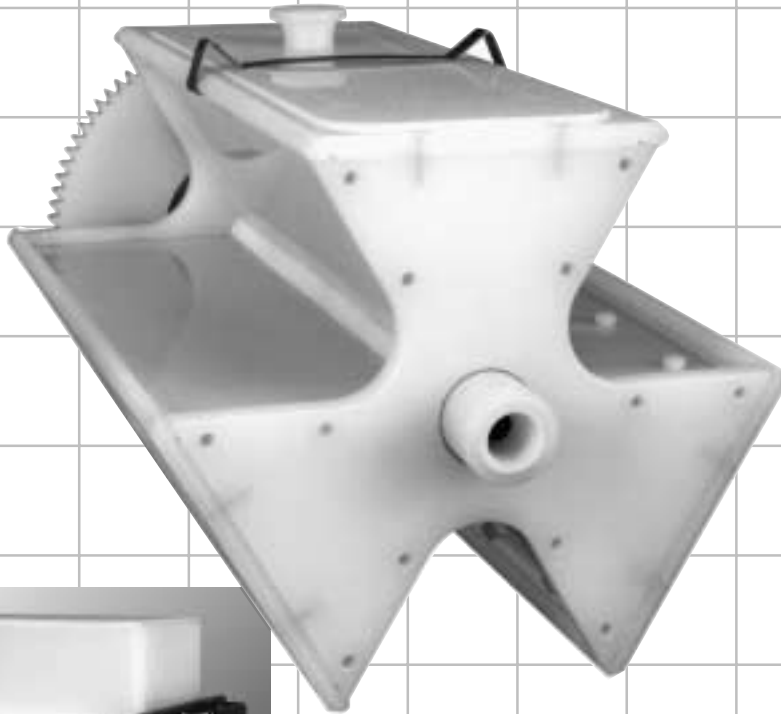


Paddle Wheel

MULTI-COMPARTMENT PLATING BARREL



The versatile Paddle Wheel Plating Barrel allows you to barrel plate parts that previously could only be rack plated. It also allows you to run several small lots simultaneously with optimal quality and productivity.

The Paddle Wheel's patented advanced geometry and adaptability make it the perfect auxiliary barrel that no shop can afford to be without.

 **Hardwood Line**
MANUFACTURING COMPANY

PADDLE WHEEL FEATURES

The three separate compartments of the Paddle Wheel allow you to run several small batch lots at the same time. It also enables you to run "problem" parts such as long rods without tangling.

Perforations on all three sides of each compartment combined with the Paddle Wheel's unique shape results in maximum solution transfer with every revolution of the barrel.

The Paddle Wheel is designed to be completely adaptable to your needs. It is available in a wide range of standard sizes, from the 4x6 Portable, to the full size 16x36 production barrel.

KD construction allows panels and doors to be interchanged with ease. Various non-moving contact methods are available to suit specific part requirements. Individual compartments of the same barrel can be fitted with different contact methods.

Perforations are available in all standard sizes as well as laser slotted (.010", .020", .030").

Each compartment may be perforated with various size holes:
 Polypropylene: 3/64" to 1/2"
 Laser Perforations: .010", .020", .030"

Overhead motor controlled units available in 200/1P, 220/3P, 110/1P, Air driven or D.C.



All sides of each compartment are perforated for better solution transfer through workload.

Unique design creates pumping action for gentle agitation

Three (3) individual compartments

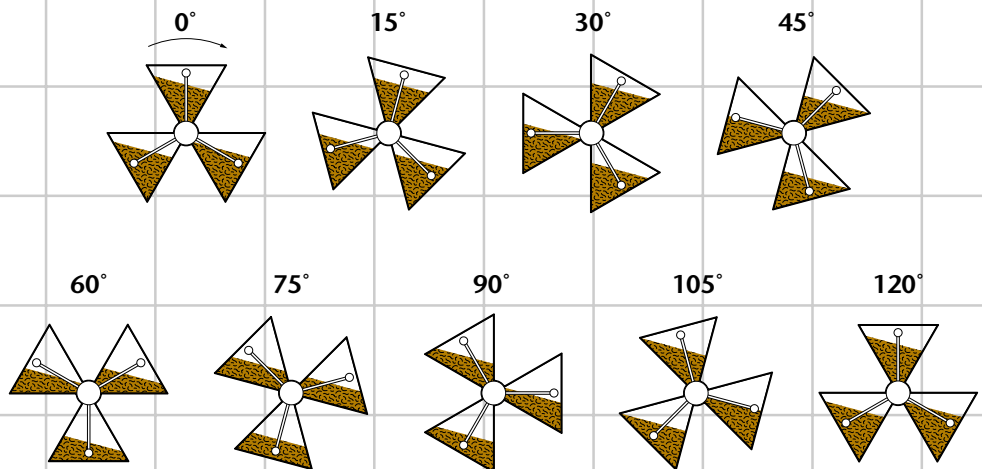
Available in sizes from 4" X 6" to 16" x 36"

"Cylinder" hangerarms adaptable to other manufacturers equipment

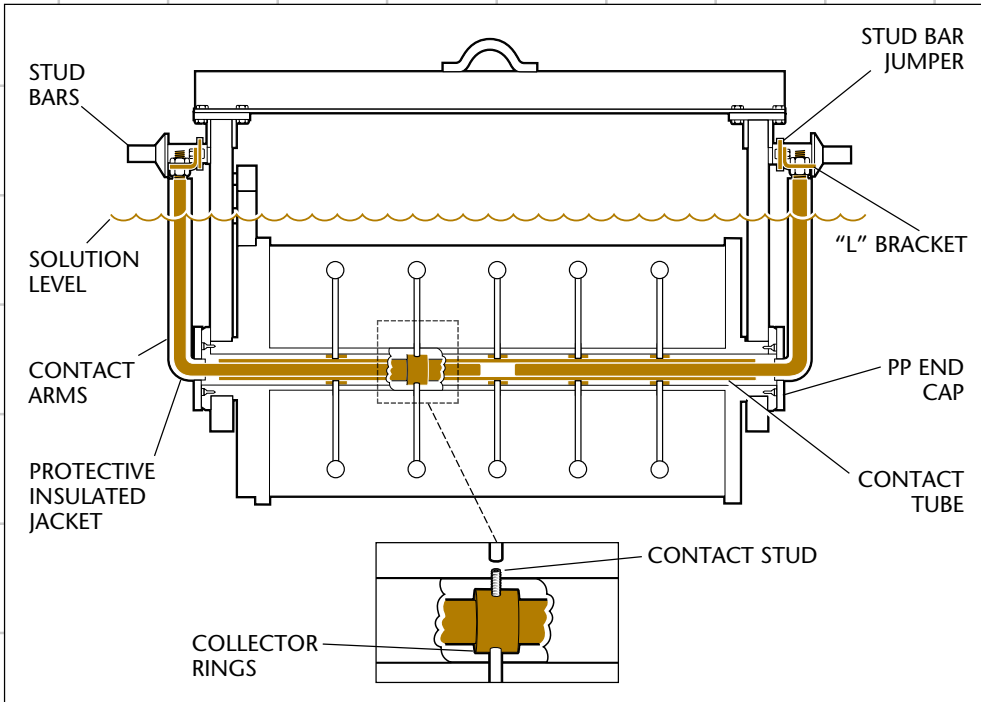
Standard steel superstructure is protected with hot dipped plastisol or 2 part epoxy paint. Other coatings are available on request

PARTS DISTRIBUTION DURING CYLINDER ROTATION

Regardless of cylinder rotation, a connection between the parts and the contact system is always maintained, insuring consistent plating throughout the load.



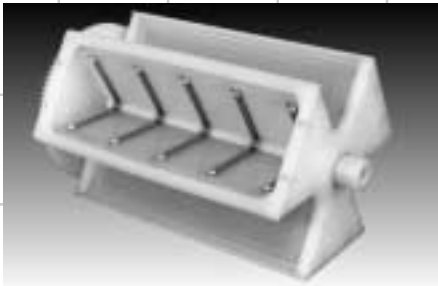
C O N T A C T S Y S T E M S



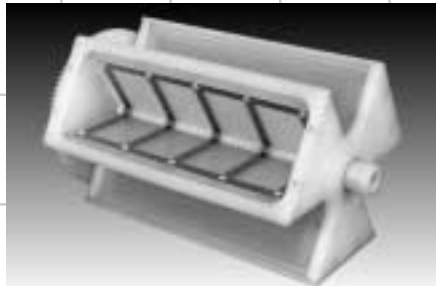
Electrical current is transferred in from the **stud bars** to the **contact arms**. The arms are drawn up tight by means of the upper **"L" bracket**, insuring positive contact to the **stud bar jumper**. A **protective insulated jacket** encases the exposed portion of the arms. A **PP end cap** prohibits stray current from entering the cylinder's inner core.

The contact arms are inserted into a **contact tube**, positioned within the central core of the Paddle Wheel cylinder. This tube revolves with the cylinder around the fixed contact arms, allowing current to pass through to the **collector rings** which are positioned around the contact tube.

The collector rings transfer current to the three compartments and keeps the tube fixed to the cylinder. (The number of collector rings vary depending on cylinder length.) **Contact studs** lock the rings around the contact tube and to the compartment. Depending on your application, various contact systems can be affixed to these rings.



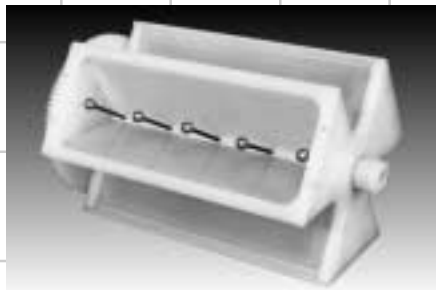
YOKE



STRIP



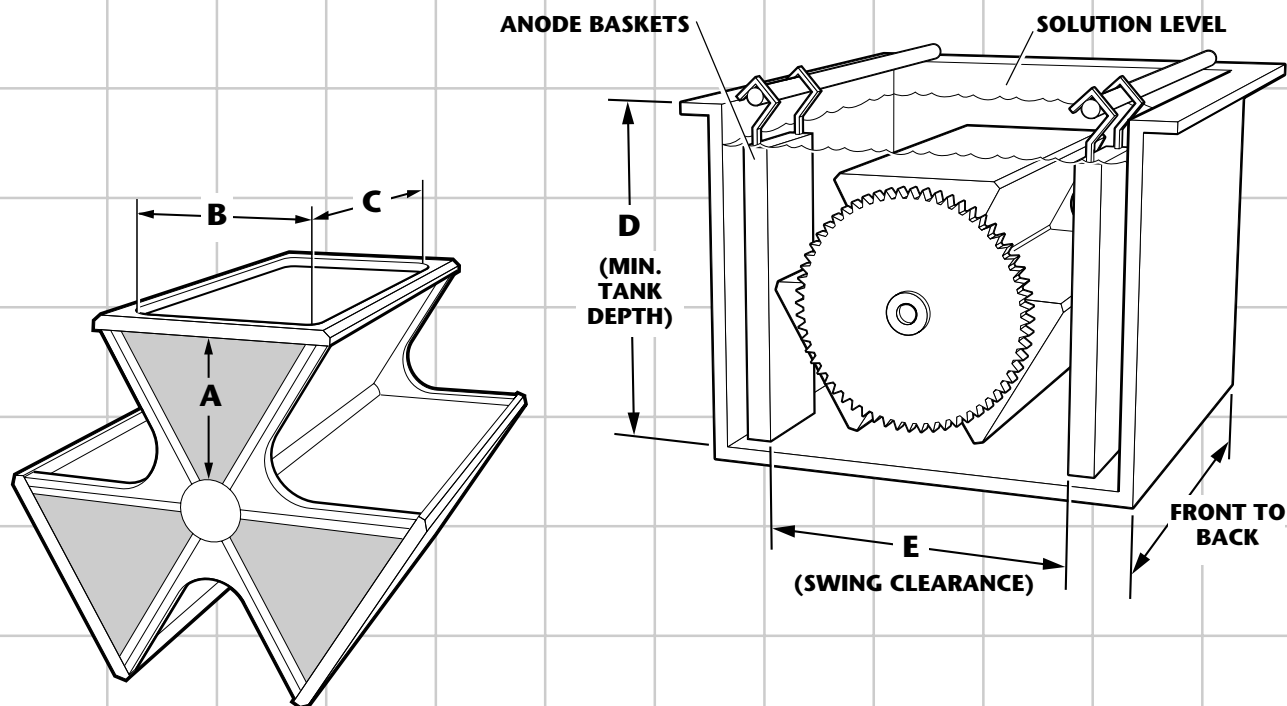
CHAIN



PIN/BALL

System	Portable	Production
Yoke	1/16" x 5/8" x lgth s.s.	1/16" x 1" x lgth s.s.
Pin/Ball	1/4" dia. x ht. x 3/4" dia ball s.s./brass	3/8" dia. x ht. x 3/4" dia. ball s.s./brass
Strip	1/8" x 1/4" x length s.s.	1/16" x 1" x length s.s.
Chain	single brass #12 jack	single s.s. #6 jack

SPECIFICATIONS



Barrel Size	Compartment Size						Volume Per Compartment		Tank Size				Minimum Front to Back	
	A		B		C				D		E			
	in	mm	in	mm	in	mm	in ³	L	in	mm	in	mm	in	mm
4x6	1.750	44.	2.438	62	5	127	11	0.2	16	406	7.5	190	12	304
6x12	3.125	79.	4.063	103	11	279	70	1.1	18	457	10	254	20	508
10x18	4.750	121.	6.000	152	17.5	444	249	4.0	23	584	15	381	30	762
10x24	4.750	121.	6.000	152	24	610	342	5.6	23	584	15	381	36	915
14x30	5.875	149.	7.500	190	28	711	617	10.0	32	813	22	559	45	1143
14x36	5.875	149.	7.500	190	34	863	749	12.2	32	813	22	559	51	1295
16x30	6.875	175.	8.625	219	28	711	830	13.5	34	864	24	610	45	1143
16x36	6.875	175.	8.625	219	34	864	1008	16.4	34	864	24	610	51	1295

DISTRIBUTED BY:



4045 N. Elston Ave., Chicago, IL 60618
 Phone: (773) 463-2600 — Fax: (773) 463-9222
 email: sales@hardwoodline.com
 Web Site: www.hardwoodline.com